



DEKO Doors

A Unique and Extensive Range of Doors in Aluminium Frames







DEKO Doors - a Unique and Extensive Range of Doors

Much emphasis has been placed on the design and development of the DEKO door range. Doors make an important statement within an interior, which makes it important that they have good appearance, are of a high quality, and function perfectly.

Our wide selection of interior doors makes it possible to comply with fire, and sound requirements whilst providing an attractive and well designed solution.

DEKO Doors are available in a wide range of designs, colours, and surface finishes. DEKO Doors can be installed in our own system partitions and glazed partitions as well as conventional types of concrete, brick, and drywalls. This makes it possible to use the same door construction throughout the building.

DEKO Doors are installed in a unique aluminium frame system, which is known for its strength and stability as well as its attractive appearance.



The DEKO Aluminium Frame System

The aluminium frame system is based on an aluminium profile which has high stability and ensures a seamless finish. The profile is easy to install and dismantle making alterations simple.

As standard, the aluminium frame is produced in natural anodised aluminium or powder coated in white, but a wide range of other colours is also available. The aluminium frame is produced in varying widths, which makes it possible to install DEKO doors in all types of walls throughout the building.

DEKO have developed an aluminium snap-on architrave profile. This is clipped onto the frame, providing an attractive joint detail with no visible fixings.

Alternatively, a DEKO Door can be finished with conventional timber architraves or joint filler can be used between the partition and door frame.

The aluminium frame and architrave system are perfect choices if future alterations are likely, as they are extremely easy to dismantle and refit.



A Wide Range of Doors

Three types of door leaves can be installed within the DEKO aluminium frame: solid, glazed, and fully glazed.

Solid timber doors can be supplied in any colour but are also available with veneer surfaces, e.g. beech or oak.

4 or 6 mm clear toughened glass is used for the glazed sections of glazed doors. Where specific fire or sound ratings are required special glass can be inserted. Doorframes for glazed doors are as standard supplied in timber, but can also be delivered in aluminium.

Fully glazed doors are available and supplied using toughened glass which closes tight to the rubber profiles in the frame, providing a soundproof connection.

In the standard format DEKO Doors can be delivered with approval and certification according to the Danish Standard with fire classifications up to BD60 and sound classifications up to 35 dB.

All doors are prefabricated, which eliminates any need for site finishing after installation. All DEKO Doors have been awarded the Danish Indoor Climate Labelling.





Dimensions

DEKO Doors are available as single or double leaf.

Single doors are available in module sizes from 7 x 21 M to 12 x 21 M, double doors in size 18 x 21M. Non standard sizes are available to order.

The aluminium frame is produced in widths from 93 to 230 mm, which makes it possible to install the frame in all types of partitions. At the same time the stable framework makes it possible to produce doors in individual module sizes.

DEKO door leaves for solid and glazed doors are either 40 or 63 mm thick depending on the specific sound and fire requirements. A fully glazed door with toughened glass is 10 mm thick as standard.



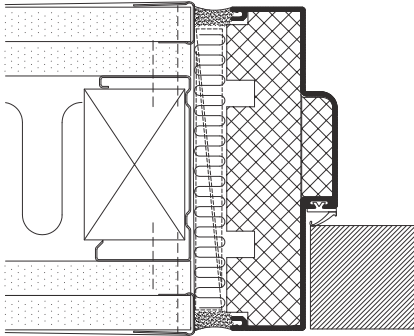
Ironmongery

For solid and glazed doors DEKO offer several types of handles and locks in addition to the standard ranges.

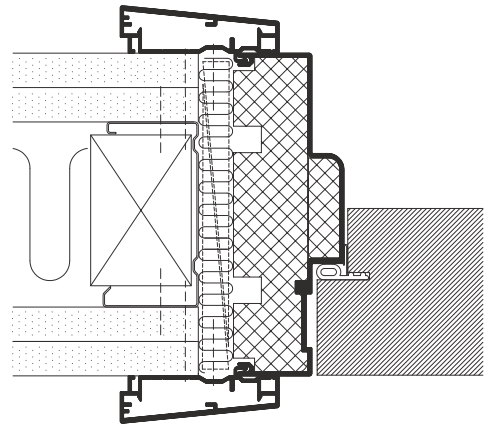
Fully glazed doors are as standard provided with handles, lock box, and hinges in natural anodised aluminium.



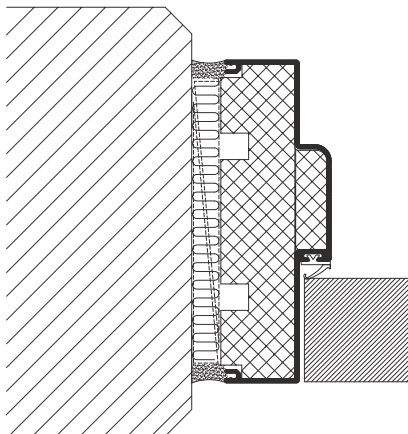
Details for DEKO Doors



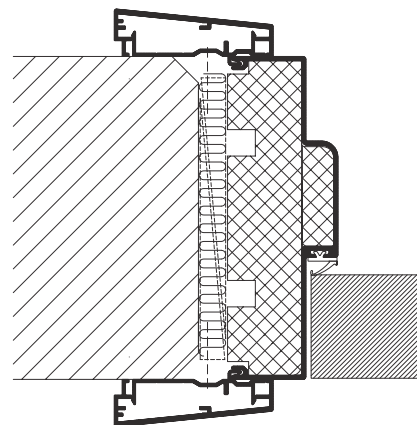
Door in drywall - sealed joint



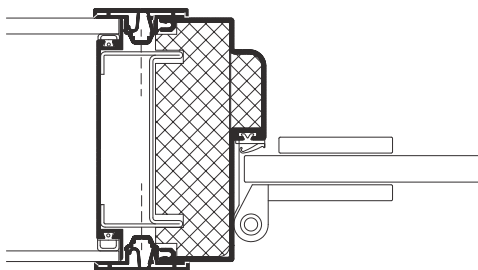
Sound-rated door in drywall
aluminium architrave type ASIF



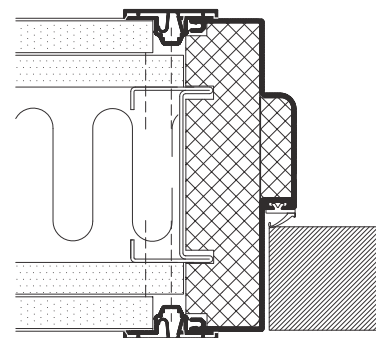
Door in concrete wall - sealed joint



Door in concrete wall
aluminium architrave type ASIF



Fully glazed door in DEKO GV glazed system partition
aluminium architrave type ASPD



Door in DEKO PF system partition
aluminium architrave type ASPD

For more detailed drawings, technical information, and project examples, see www.dekodoors.com



Standard Solid and Glazed Door Dimensions

Module		Door Leaf (mm)	Frame - Outer Dimension (mm)	Hole Dimension (mm)	Fire Resistance *	Sound Class **
Single doors	7 x 21	625 x 2040	686 x 2080	710 x 2100	F30 BD30 BD60	dB30 dB35
-	8 x 21	725 x 2040	786 x 2080	810 x 2100		
-	9 x 21	825 x 2040	886 x 2080	910 x 2100		
-	10 x 21	925 x 2040	986 x 2080	1010 x 2100		
-	11 x 21	1025 x 2040	1086 x 2080	1110 x 2100		
-	12 x 21	1125 x 2040	1186 x 2080	1210 x 2100		
Double doors	18 x 21	861+861 x 2040	1786 x 2080	1810 x 2100		

*) Both solid and glazed doors are certified according to Danish Standard.

**) Solid doors are certified according to Danish Standard.

For updated type values go to www.deko.com



DEKO partitions ltd of denmark was established in 1970 and presently has approximately 300 employees. DEKO is the leading producer of demountable, glazed, and folding partitions in Scandinavia and distributes its product range to more than 35 countries worldwide including Europe, Africa, and Asia in co-operation with established local distributors.



DEKO partitions ltd of denmark
Maarkaervej 11
DK-2630 Taastrup - Denmark

Tel: +45 43 55 77 11
Fax: +45 43 55 77 13

info@deko.com – www.deko.com