



# DEKO MV

Panel Wall with Discrete Stacking Solutions









## DEKO MV - the flexible panel wall

Flexibility is a key concept for DEKO; so naturally, our product range includes a well designed panel wall system.

Like the DEKO FV folding partition, DEKO MV is perfect for dividing a large area into smaller units. With each element being operated individually there are countless stacking options, e.g. in panel enclosures or in separate rooms.

The DEKO MV panel wall is produced in various finishes according to customers' specific requirements enabling the panel wall to have the same appearance as adjacent surfaces.

---



## Sound and Fire Specifications

DEKO MV elements are formed from a specially developed construction consisting of aluminium profiles, timber panels, and sound absorbing insulation material, which makes it possible to achieve a sound reduction of up to  $R_w$  53 dB.

The panel wall is also fire rated according to European standards in the categories EI30 and EI60.

A rubber strip is fitted to the top and bottom of the panels. When the panels are locked the rubber strip seals tightly against the adjoining parts of the building.

The elements are between 85 and 110 mm thick depending on the specific sound and fire requirements. The size of the elements depends on the height and length of the wall.



## Finishes

DEKO panel wall sections can either be spray-painted in a chosen colour or coated with other types of surface material, e.g. laminate, melamine or timber veneer to provide an attractive surface.

As standard, the elements are delivered with an edge trim, but they can also be provided without trims.

Tracks and joints are produced in the standard colour white, but can also be delivered in other colours.





## Stacking and Closing Options

The panels of the DEKO MV screen can be pushed together and locked separately. Each element is locked at the floor and the ceiling with a concealed cremone bolt to ensure a highly stable wall.

DEKO MV is delivered either with top hung centres or two point hung fixings depending on the stacking option chosen.

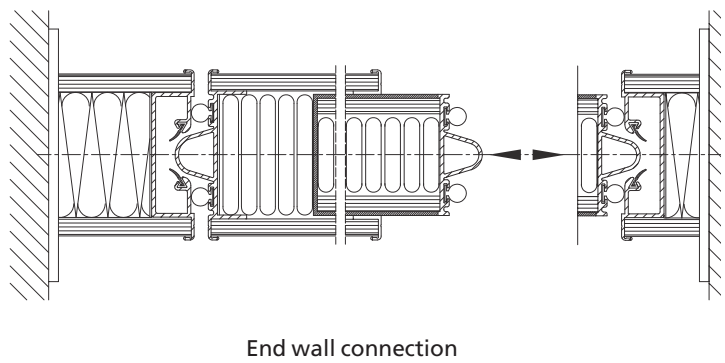
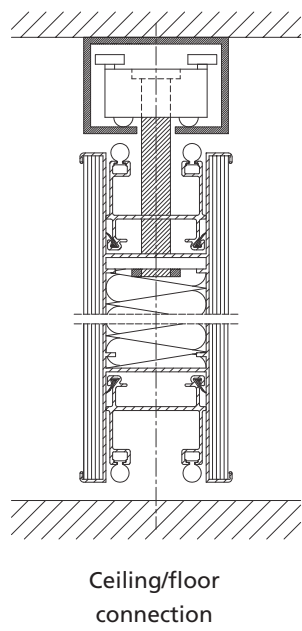
The panel wall is installed either centrally or off-centre according to the preferred stacking option.



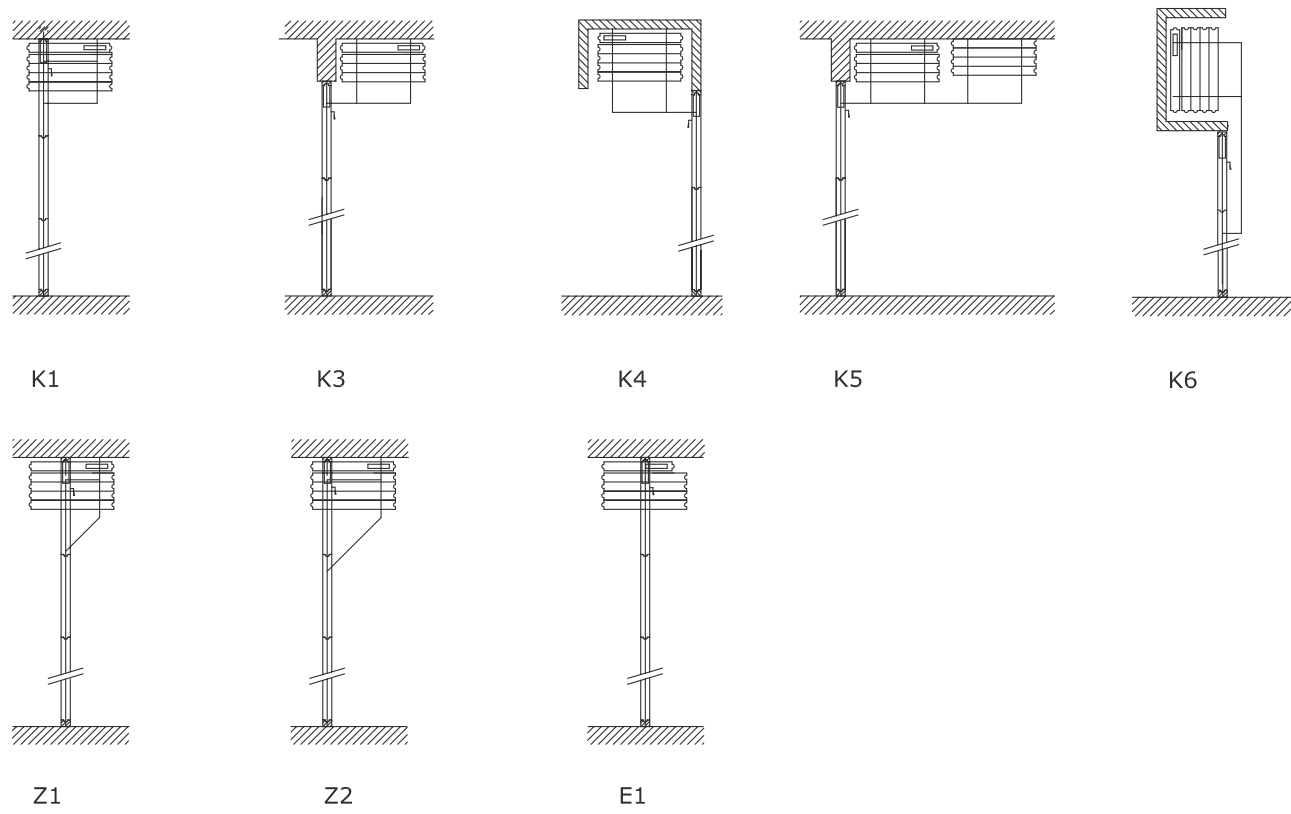
It is possible to insert a door in one or more of the panels.

Since the panel wall consists of individual elements, it can be stacked in concealed enclosures or in separate rooms by continuing the tracks.

# Details for DEKO MV



# DEKO MV Stacking Options







# Type Summary

Type	Thickness (mm)	Weight (kg/sqm)	Airborne Sound Insulation (Rw)	Fire Resistance
MV 41	85	26	41 dB	-
MV 44	85	30	44 dB	-
MV 46	85	35	46 dB	-
MV 48	85	40	48 dB	-
MV 50	85	42	50 dB	-
MV 52	100	52	52 dB	-
MV 53	100	54	53 dB	-
MV EI30	100	55	46 dB	EI30 *
MV EI60	110	61	50 dB	EI60 *

Maximum element width is 1250 mm. Maximum element height is 6000 mm.

\*) Fire tested according to European standards.

For updated type values go to [www.deko.com](http://www.deko.com)



DEKO partitions ltd of denmark was established in 1970 and presently has approximately 300 employees. DEKO is the leading producer of demountable, glazed, and folding partitions in Scandinavia and distributes its product range to more than 35 countries worldwide including Europe, Africa, and Asia in co-operation with established local distributors.



DEKO partitions ltd of denmark  
Maarkaervej 11  
DK-2630 Taastrup - Denmark

Tel: +45 43 55 77 11  
Fax: +45 43 55 77 13

[info@deko.com](mailto:info@deko.com) – [www.deko.com](http://www.deko.com)